

MONTHLY MEMBERSHIP PROGRESS REPORT

District 11 E1

Results as of: 5/31/2026

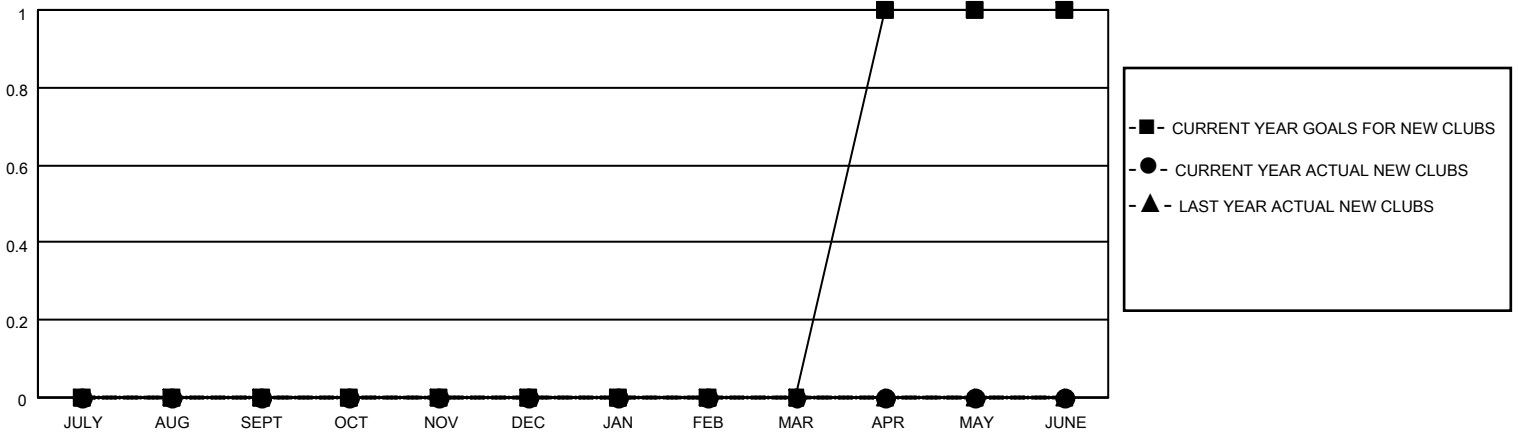
GMT:

LOCATION MICHIGAN

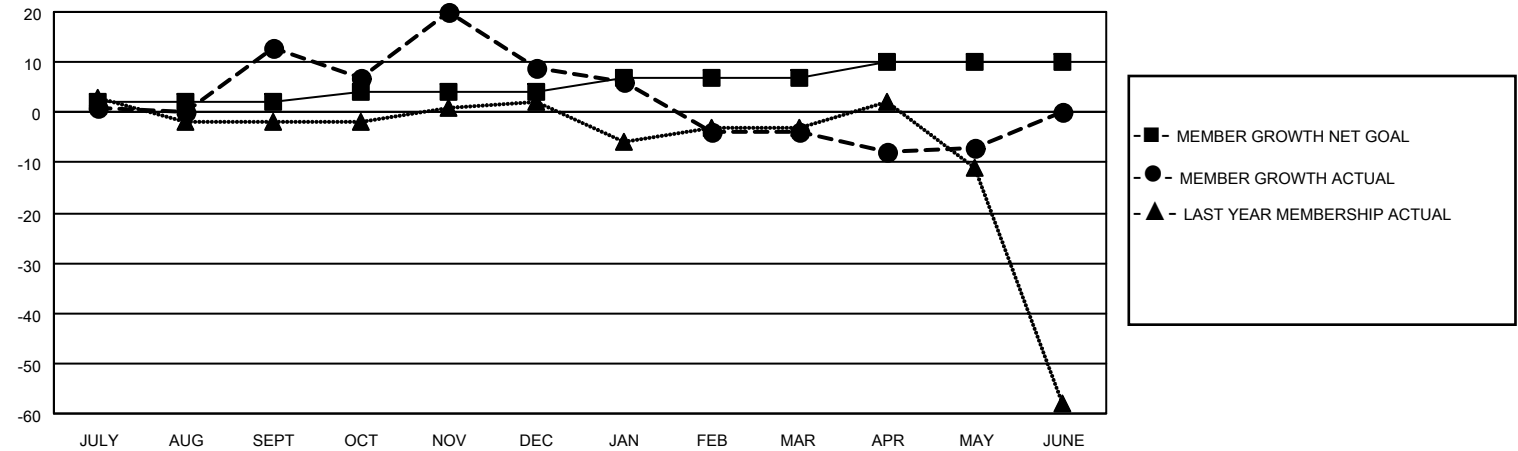
GMT CA

Clubs				Members			
RESULTS FOR 2025-2026				RESULTS FOR 2025-2026			
QUARTER	NEW CLUB GOAL	NEW CLUBS	DROPPED CLUBS	QUARTER	MEMBER GROWTH NET GOAL	MEMBER GROWTH ACTUAL	DROPPED MEMBERS ACTUAL (including transfers)
JULY/AUG/SEPT	0	0	0	JULY/AUG/SEPT	2	33	18
OCT/NOV/DEC	0	0	0	OCT/NOV/DEC	2	38	32
JAN/FEB/MAR	0	0	0	JAN/FEB/MAR	3	13	19
APR/MAY/JUNE	1	0	0	APR/MAY/JUNE	3	9	12

GOALS AND ACTUAL NEW CLUBS CUMULATIVE



GOALS AND ACTUAL MEMBERS CUMULATIVE



DROPPED CLUBS: 0	20 CLUBS OF 35 ADDED 1 OR MORE NEW MEMBERS	GENDER DISTRIBUTION
		MALE 531 (61.89%)
		FEMALE 328 (38.23%)
DROPPED MEMBERS	CLICK HERE FOR CUMULATIVE MEMBERSHIP DATA	TOTAL FAMILY UNIT MEMBERS 225
DECEASED 15		FAMILY MEMBERS PAYING HALF DUES 114
CLUB CANCELLED 0		
OTHER 65		
TOTAL 80		